



# EVENTS

AT MELBOURNE SKYDECK



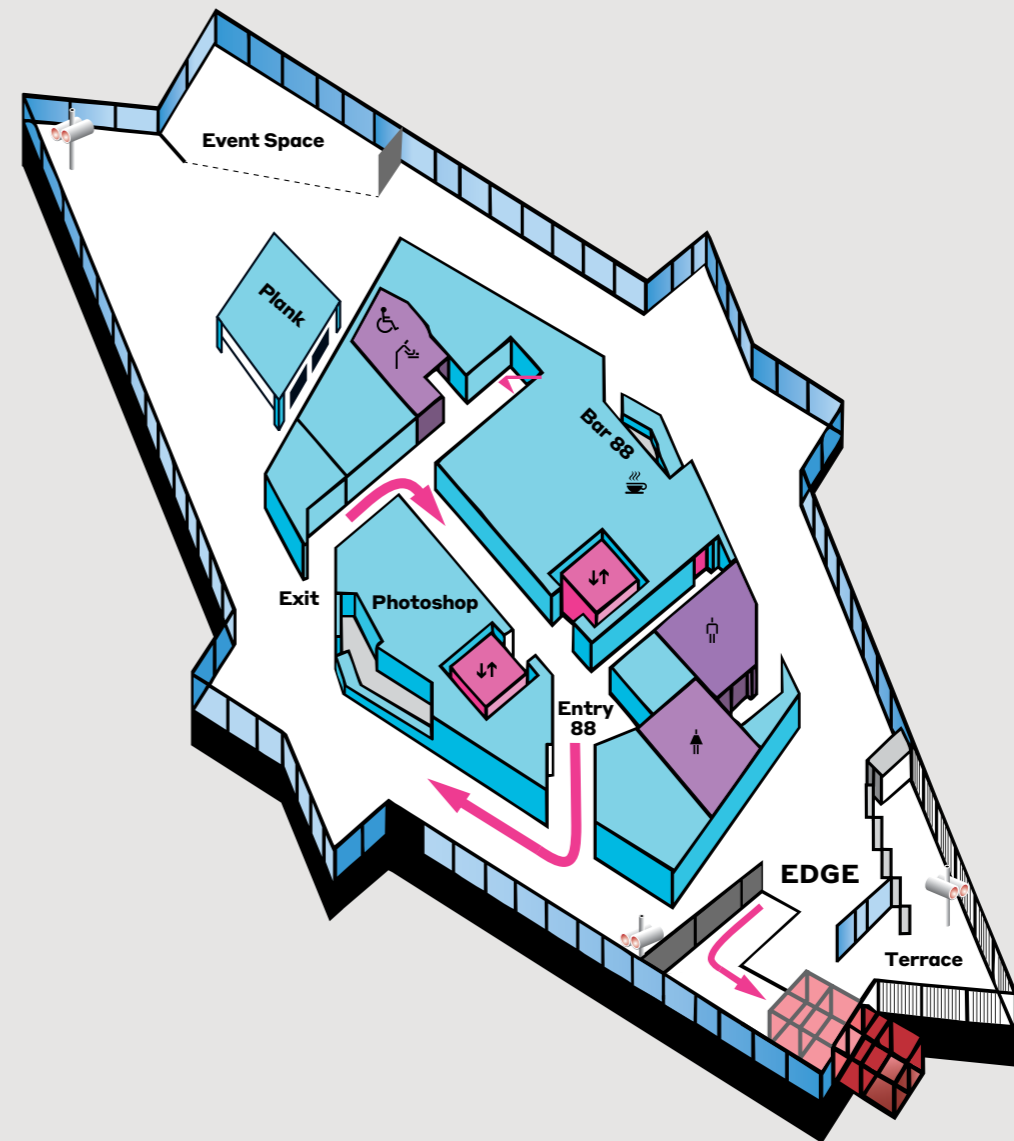


## EVENTS AT MELBOURNE SYDECK

A unique event space situated 300m above Melbourne. Melbourne Skydeck offers a unique and elevated event space. Situated on the 88th floor of the iconic Eureka Tower, it provides breathtaking 360-degree views of the city skyline, and surrounding landscapes. Whether you're celebrating a corporate event, social celebration, special event, or simply looking for a team unique get-together, our venue is the perfect setting for creating lasting memories. Day or night, the Melbourne Skydeck promises an extraordinary experience with the city as your backdrop.



### EVENTS SPACE





# PACKAGES

## COCKTAIL PACKAGES

Guests will have exclusive access to our private area during the event, with the option to stay within the space or explore the observation deck, all while enjoying the stunning scenery.

### ALCOHOLIC BEVERAGE PACKAGE - FROM \$45PP\*

This package includes access to the observation deck, an exclusive event space, and a dedicated host. A beverage package with beer, wine, and soft drinks, all served directly from the event space.

OR

### BAR TAB PACKAGE - FROM \$22PP\*

This package includes access to the observation deck, exclusive event space and a bar tab including beer, wine, and soft drinks. Upon request, you can also add a selection of spirits, cocktails, and champagne. Drinks are served from Bar 88, conveniently located near the event space.

OR

### NON-ALCOHOLIC BEVERAGE PACKAGE - FROM \$35PP\*

This package includes access to the observation deck, an exclusive event space, and a dedicated event host. Non-alcoholic beverages, including soft drinks, juice, tea, and coffee, will be served from Bar 88, conveniently located near the event space.

*\*There is a minimum spend requirement for food, beverages, and experiences. To include food and experiences, a beverage or bar tab package must be selected. From price is based on a 1-hour event duration.*



# FOOD & BEVERAGE

## FOOD

### CANAPÈS

- Canapès (selection of 3) \$20pp
- Canapès (selection of 6) \$40pp
- Canapès (selection of 9) \$60pp

### COLD CANAPÈS

- White bean hummus & curried pumpkin tartlette *v*
- Citrus cured kingfish, sweet ginger, avruga *gf*
- Lamb backstrap, bean tapenade, olive *df*

### HOT CANAPÈS

- Mushroom & aged Comte arancini, garlic mayo *v, gf*
- Lamb shank pie, rosemary, tomato jam
- Short rib & chervil croquette, chipotle mayo *gf*
- Lemongrass chicken pancake, soy, chilli dip
- Beef skewer, gribiche sauce, pickled shallots *gf*
- Curried vegetable samosa, yoghurt, coriander raita *v*

### DESSERT CANAPÈS

- Cinnamon doughnut, raspberry curd
- Homemade brownie, candied orange cremeux

### MORE SUBSTANTIAL ITEMS

- add \$12 per person, per item
- Master stock glazed duck baby bao, daikon radish kimchi *df*
- Butternut pumpkin gnocchi, cheese emulsion, mascarpone *v*
- Southern ranges beef burger, pickled beetroot, seeded mustard
- Rockling tempura tortilla, iceberg, tartare sauce *df*

### PLATTERS - \$100 EACH

*(serves approximately 10 guests, minimum order of 2 per platter type)*

- Cheese and Charcuterie
- Seasonal Fruit

### SIDES - \$15 EACH

- Bowl of Chips

## BEVERAGES

### WINE & SPARKLING

- Malvern Park Sauvignon Blanc
- The Drives Shiraz
- Peg and Gus Premium Prosecco

### BEER

- Asahi Super Dry
- Peroni Red

### NON-ALCOHOLIC

- Coca-Cola / Coca-Cola No Sugar / Sprite
- Tea / Coffee / Juice / Cider

### UPGRADES

- Additional 1 Hour Beverage Package \$10pp
- Signature Cocktail \$18 each
- Mocktails \$10 each

### BAR TAB PACKAGE

Guests can select their preferred beverages from our extensive menu, including a variety of wines, beers, spirits, and non-alcoholic options. Alternatively, you have the choice of included beverages. Once the tab reaches the limit, you can choose to extend it or switch to a cash bar.

*Food and Beverage selection subject to availability and may change at any time.*



# PACKAGES

## EXPERIENCES

### VOYAGER THEATRE - VR EXPERIENCE

The first of its kind in the Southern Hemisphere and largest of its kind in the world, the award-winning Voyager Theatre takes you on an immersive virtual journey around 16 iconic Melbourne and Victorian experiences. From feeling the thrill of riding Luna Park's rollercoaster, to the thunderous crowd at the MCG you'll be amazed by the 360-degree cinematic and sensory voyage in 6D, Super 8K high-definition and scent sensations.

**Duration:** 15 minutes for groups up to 20

**Includes:** Virtual Reality experience

**\$15 per person**

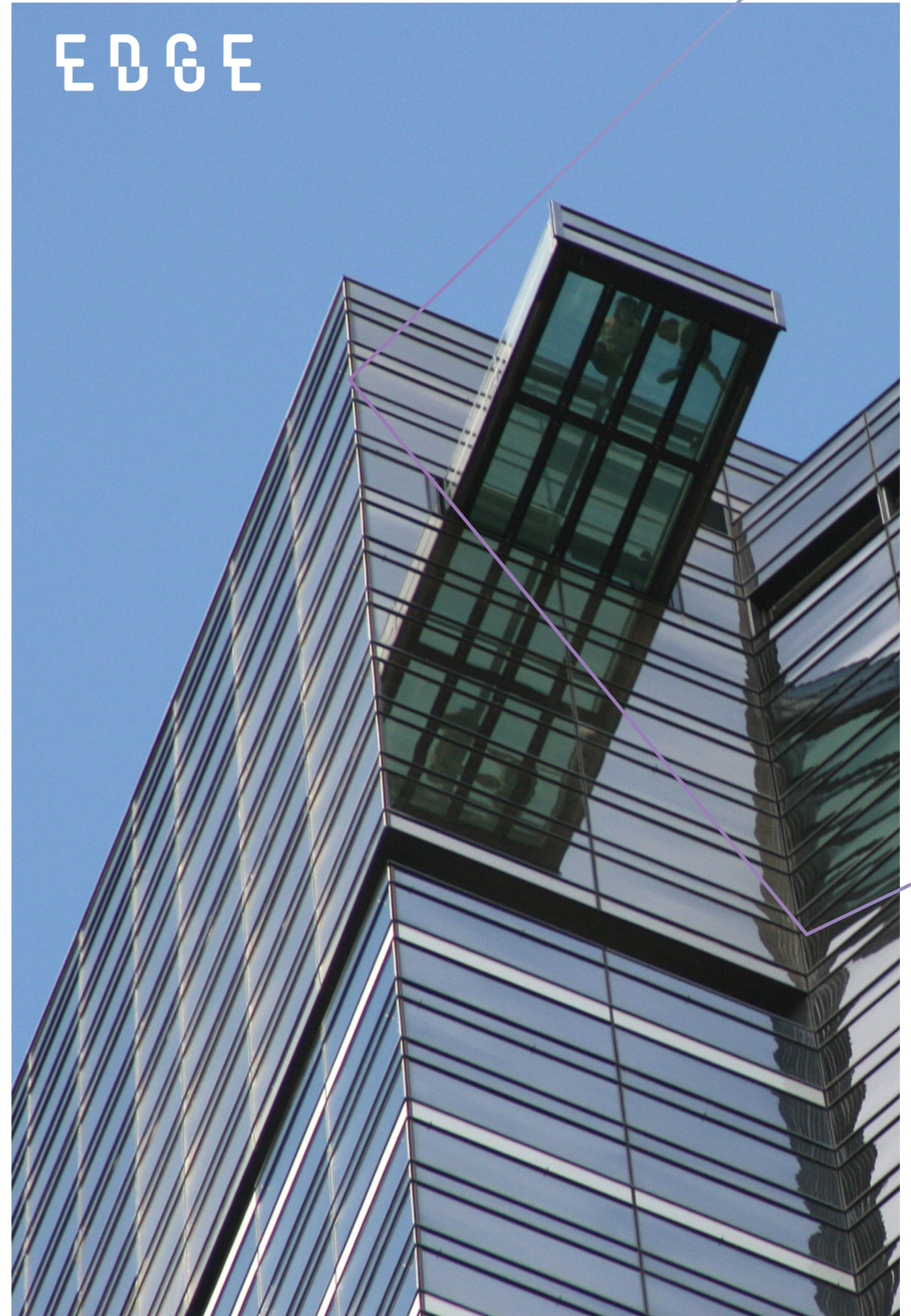
### EDGE EXPERIENCE

A world-first, Edge suspends daring guests in a transparent glass cube that projects out from the Skydeck, leaving you suspended nearly 300 metres above the streets of Southbank. Capture this moment with an Edge photo, a fantastic memento of a memorable evening at the highest viewing platform in the southern hemisphere.

**Duration:** 6 minutes per group of 12

**Includes:** Edge Experience & digital photo of group


**\$15 per person**





# MELBOURNE SKYDECK

 @melbourneskydeck

 @melbourneskydeck

**Melbourne Skydeck**

(03) 9693 8888 | [events@melbourneskydeck.com.au](mailto:events@melbourneskydeck.com.au) | [melbourneskydeck.com.au](http://melbourneskydeck.com.au)

*Melbourne Skydeck All information & prices are correct at time of Publication (May 2024)  
and subject to change without notice.*

[CLICK HERE](#)

For the latest **Terms and Conditions**

MELBOURNESKYDECK.COM.AU